

**REVOLVE**

# NEW ARRIVAL

Universal centrifuge is equipped with a maintenance free drive, a large display & simple interface for efficient operation for daily lab usage. The programmable centrifuge can deliver up to 15000 RPM and can accommodate different types of rotors. It features various programmable mode to save time & add convenience. Quick cool function temperature from -10°C to 40°C.



REVOLVE REFRIGERATED  
UNIVERSAL CENTRIFUGE 15000 RPM



## SALIENT FEATURES

Centrifuge has following features:

- Delivers up to 15000 RPM for all compatible rotors
- BLDC maintenance free motor drive
- Imbalance detection safety with auto cutoff feature
- Lid lock safety feature: Lid does not open during operation
- Program mode for customized operation
- Speed setting by RPM/RCF mode
- Countdown timer range from 30 sec to 999 mins 59 second & infinite mode
- Last run memory feature
- Convenient and easy user interface
- Emergency lid release during power cutoff
- Automatic internal diagnosis & error display
- Auto rotor detection feature

## Specification

Max capacity	400 ml (4x 100 ml)
Speed Setting	Variable 500 - 15000 RPM
Speed Steps	± 100 RPM
Speed Accuracy	± 100 RPM
Run Time	30 sec to 999 mins 59 second & infinite mode
Min. Acceleration Time	60 seconds
Min. Deceleration Time	60 seconds
Noise Level	<65 dB (A)
Ambient Temperature	5 - 40°C
Permissible Relative Humidity	~80%
Size (L x Bx H)	705 X 585 X 330 mm
Weight	< 57 kgs without rotor
Refrigerant	R134a

# ROTOR SELECTION GUIDE



## FIXED ANGLE ROTOR

Capacity : 4 x 100 ml  
6000 RPM  
4628 g



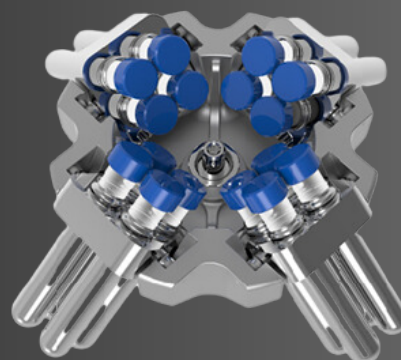
## SWING OUT ROTOR WITH LID

Capacity : 4 x 100 ml  
4500 RPM  
3305 g



## FIXED ANGLE ROTOR

Capacity : 4 x 50 ml  
6000 RPM  
4750 g



## SWING OUT ROTOR

Capacity : 16 x 15 ml  
4500 RPM  
3305 g



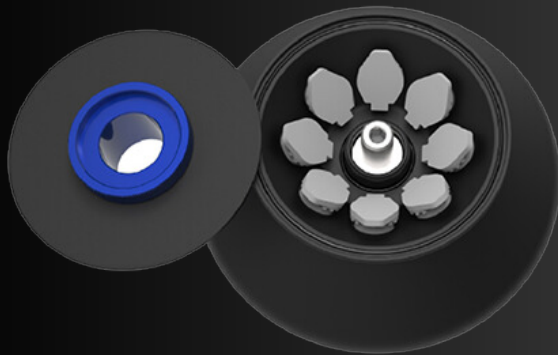
### FIXED ANGLE ROTOR

Capacity : 16 x 15 ml  
6000 RPM  
4910g



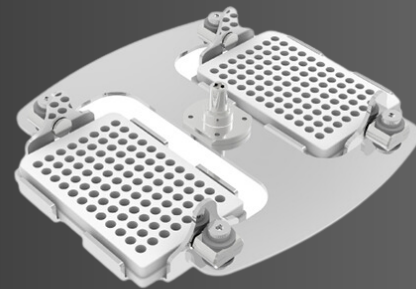
### SWING OUT ROTOR

Capacity : 32 x 6 ml  
4500 RPM  
3164 g



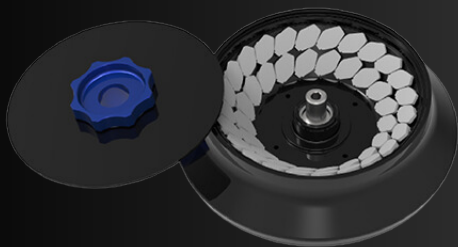
### FIXED ANGLE ROTOR

Capacity : 8 x 5 ml  
15000 RPM  
18461 g



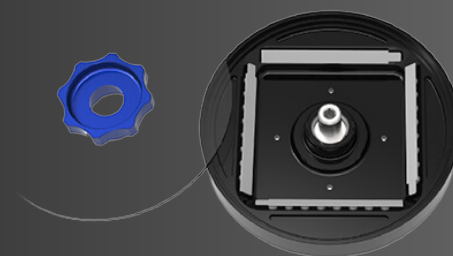
### SWING OUT ROTOR

Capacity : 2 MICROPLATES  
4500 RPM  
2377 g



### FIXED ANGLE ROTOR

Capacity : 44 x 2 ml  
15000 RPM  
22388 g



### FIXED ANGLE ROTOR

Capacity : 4 X 8STRIP PCR  
15000 RPM  
15397 g